



SOBHA SEAHAVEN

TOWER C

SOBHA  
REALTY

THE ART OF THE DETAIL



## Superheading the **SOBHA WAY**

Sobha Realty redefines the concept of luxury residential living with a repertoire of real estate projects across Dubai.

With razor-sharp focus on quality and innovation, it has created a plethora of iconic spaces such as extravagant palaces, ornate mosques, cutting edge campuses and ultra-luxurious communities with grand villas and apartments.

Pioneering the 'Backward Integration' model in real estate, Sobha Realty employs in-house mastery to create a unique offering of fine living that extends beyond the customer's expectations.

## Backward Integration *Forward Thinking*

### DESIGN

Efficiently conceptualized.

### ENGINEERING & CONTRACTING

Minutely scrutinized to precision.

### MATERIAL SOURCING

Usage of world-class technology for  
manufacturing.

### CRAFTSMANSHIP

Impeccable attention to detail from  
conceptualization to delivery

### QUALITY CONTROL

Setting a new benchmark globally.



The  
trilogy



of Sea, Sun & Sky  
is life itself.



Sleep to the symphony of the gentle sea  
waves of the *Arabian Gulf.*



Awaken to a new world  
of possibilities *Every day.*

Smell the cool *Fresh air*  
Soak in the sun's rays



# Exclusivity and Inclusivity



COME TOGETHER



Presenting Tower C

Part of the Seahaven trilogy of *Luxury* living.

It's not just a place to live. It's a place to experience life itself.







*Thrice* is nice The power of the trilogy lies in the harmony of three distinct elements that come together to create something spectacular.

Each aspect, with its own identity, creates a cohesive and unique world of unparalleled living.

Trilogy by the *Sea* Rising from Dubai Marina, Tower C of Sobha Seahaven complements Towers A & B, overlooking the Palm Jumeirah, Dubai Harbour and Ain Dubai.

*You are in the company of landmarks.*





Uniquely *Yours* As you step inside Seahaven Tower C, you enter a new world of super luxury. The One, Two and three-bedrooms units are designed to offer breathtaking ocean views that mesmerise.

With only Seven units per floor, each is designed to provide the ultimate luxury living from apartments. Every detail is expertly crafted for elegance and sophistication.

*Come home to your private haven.*









Everything by *Choice* The thrill of exclusivity takes hold from the moment you step into the lobby. With 24-hour security, your privacy and safety are closely guarded. Your guests are ushered into a separate lobby.





*Nothing is left to chance. Everything is by design*



Everything in your *Grasp*

From high-end shopping malls to world-class restaurants and entertainment venues, you'll have everything you need at your doorstep. Enjoy the convenience of a prime location without compromising on style and comfort.

-  Close to two international airports
-  Ain Dubai
-  Retail malls
-  International Cruise terminal

-  Public beaches
-  Leisure and entertainment
-  Finest restaurants
-  Marina and Harbour

## *Sea* the Difference

Enjoy unparalleled 270° to 360° views of the sea, skyline, and shore with clear views of the world-famous Palm Jumeirah.

Wake up to breathtaking views of Dubai Marina and the Arabian Sea from your private balcony. Relax in your spacious living room with floor-to-ceiling windows offering unobstructed views.



Pick *Your Mood.*













*Everything is* **Essential**

At Tower C, amenities become essential. Luxuries become necessities. It's your private club resort with indoor and outdoor settings exclusively for a few residents.



Café with dining area



Family Zone with barbeque area



Health club with Sauna & Steam



Indoor & Outdoor Cinema



Indoor & outdoor gym



Indoor Game Room



Pool Deck & Day Beds, Infinity edge leisure pool facing the harbour



kid's pool



Yoga Zone / Meditation Zone



*Live* in style everyday

Tower C's ultra-luxury interior design is where indoors and outdoors meet to create a space that exudes opulence, elegance, and sophistication. Every detail is impeccably designed to exceed your expectations. It uses high-quality natural materials, bespoke furniture, and intricate detailing to create a timeless masterpiece.

**Floor Finishes**

Large format Porcelain tiles in the main living spaces

**Wall Finishes**

Acrylic Emulsion paint on Unit walls with flushed skirting. Porcelain tile on Toilet walls

**External Façade**

High-performance double-glazed system and Glass railing

**Fixture & Fittings**

Millwork to be finished with Veneer/ Laminated/ Melamine

**White Goods**

Fully fitted Kitchen with Refrigerator, Oven, Gas Hob & Hood, Washer-Dryer and Dish washer from reputed brands like Miele or equivalent

**MEP**

Single slot diffuser and Track lighting

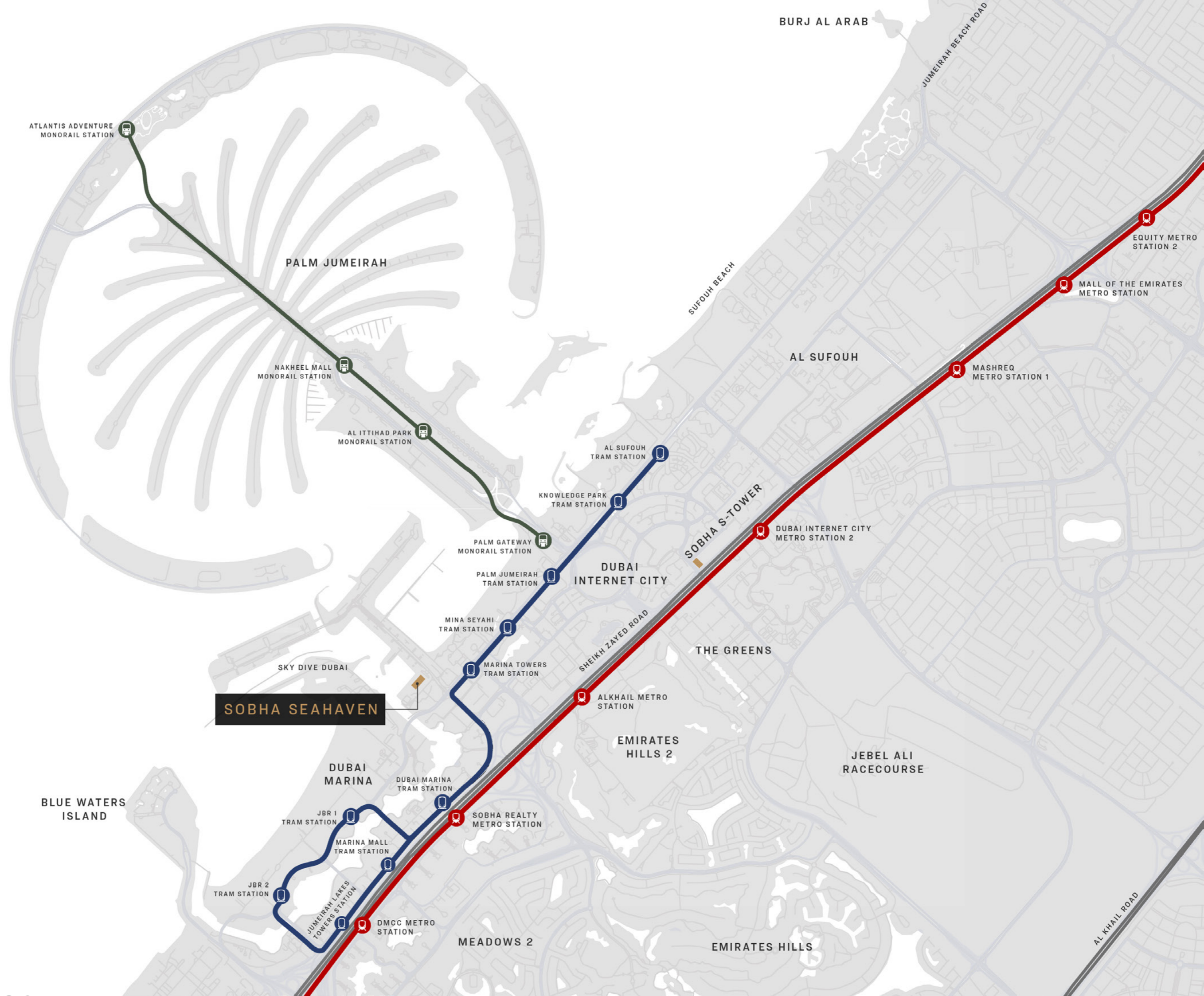
**Sanitary ware**

Smart WC. Sanitary fixtures & fittings from reputed brands like Kohler or equivalent

**Home Automation**

Smart Home automation enabled

# Location Plan



ATLANTIS ADVENTURE MONORAIL STATION

PALM JUMEIRAH

NAKHEEL MALL MONORAIL STATION

AL ITTIHAD PARK MONORAIL STATION

AL SUFOUH TRAM STATION

KNOWLEDGE PARK TRAM STATION

PALM GATEWAY MONORAIL STATION

PALM JUMEIRAH TRAM STATION

MINA SEYAHI TRAM STATION

MARINA TOWERS TRAM STATION

SKY DIVE DUBAI

**SOBHA SEAHAVEN**

DUBAI INTERNET CITY

SOBHA S-TOWER

DUBAI INTERNET CITY METRO STATION 2

SHEIKH ZAYED ROAD

THE GREENS

ALKHAIL METRO STATION

EMIRATES HILLS 2

JEBEL ALI RACECOURSE

BLUE WATERS ISLAND

DUBAI MARINA

DUBAI MARINA TRAM STATION

JBR 1 TRAM STATION

MARINA MALL TRAM STATION

SOBHA REALTY METRO STATION

JBR 2 TRAM STATION

JUMEIRAH LAKES TOWERS STATION

DMCC METRO STATION

MEADOWS 2

EMIRATES HILLS

BURJ AL ARAB

SUFOUH BEACH

AL SUFOUH

MASHREQ METRO STATION 1

MALL OF THE EMIRATES METRO STATION

EQUITY METRO STATION 2

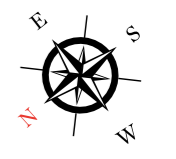
AL KHAIL ROAD



58

SOBHA SEAHAVEN TOWER C

# Site Plan



FLOOR AND UNIT PLAN  
LAYOUTS

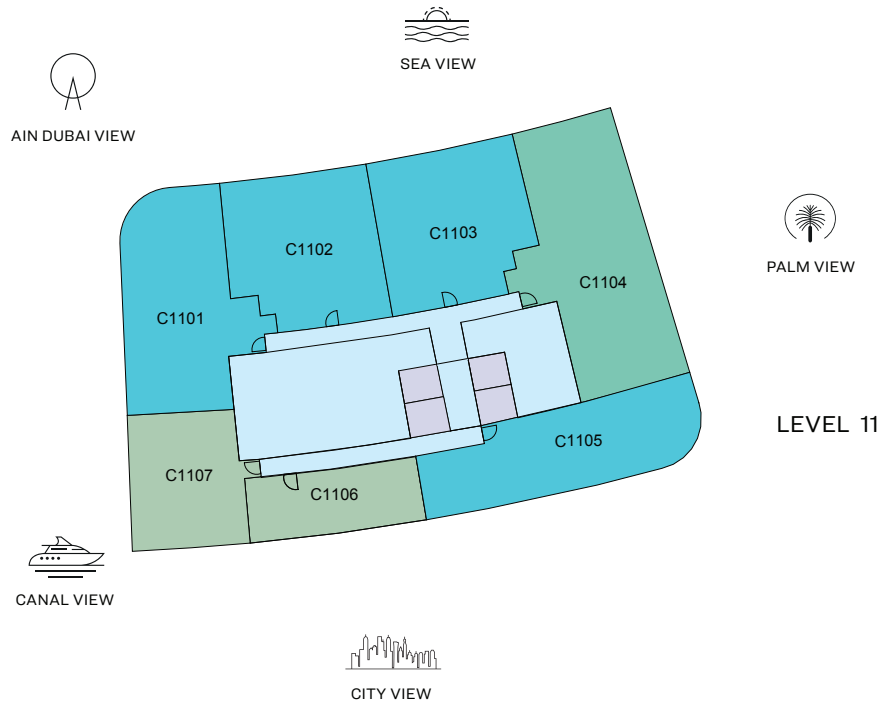


SOBHA SEAHAVEN

TOWER C

# FLOOR PLAN LAYOUT

## TOWER C



- 1 BED UNIT
- 2 BED UNIT
- 3 BED UNIT
- LOBBIES, CORRIDORS & STAIRS
- LIFTS

Disclaimer: 1. All dimensions are in metric, measured to wall finishes. 2. All materials, dimensions & drawings are approximate. 3. Information is subject to change without notice, at developer's absolute discretion. 4. Actual area may vary from the stated area. 5. Drawing are not to scale. 6. All images used are for illustrative purpose only and do not represent the actual size, features, specifications, fittings and furnishings. 7. The developer reserves the right to make revisions/ alterations, at its absolute discretion, without any liability whatsoever.

# 1 BEDROOM APARTMENT

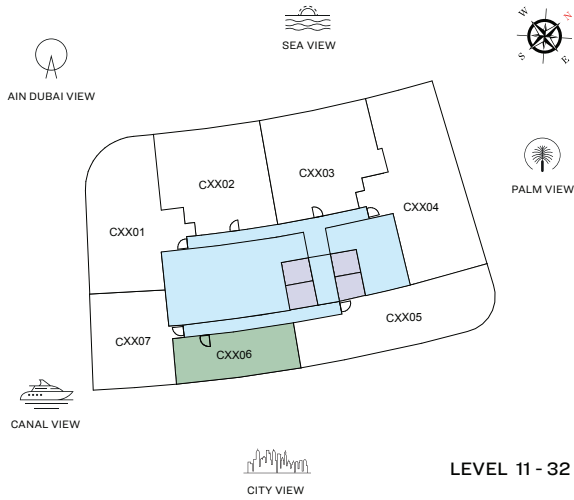
TYPE A (with powder room + balcony)

**TOTAL SALEABLE AREA**

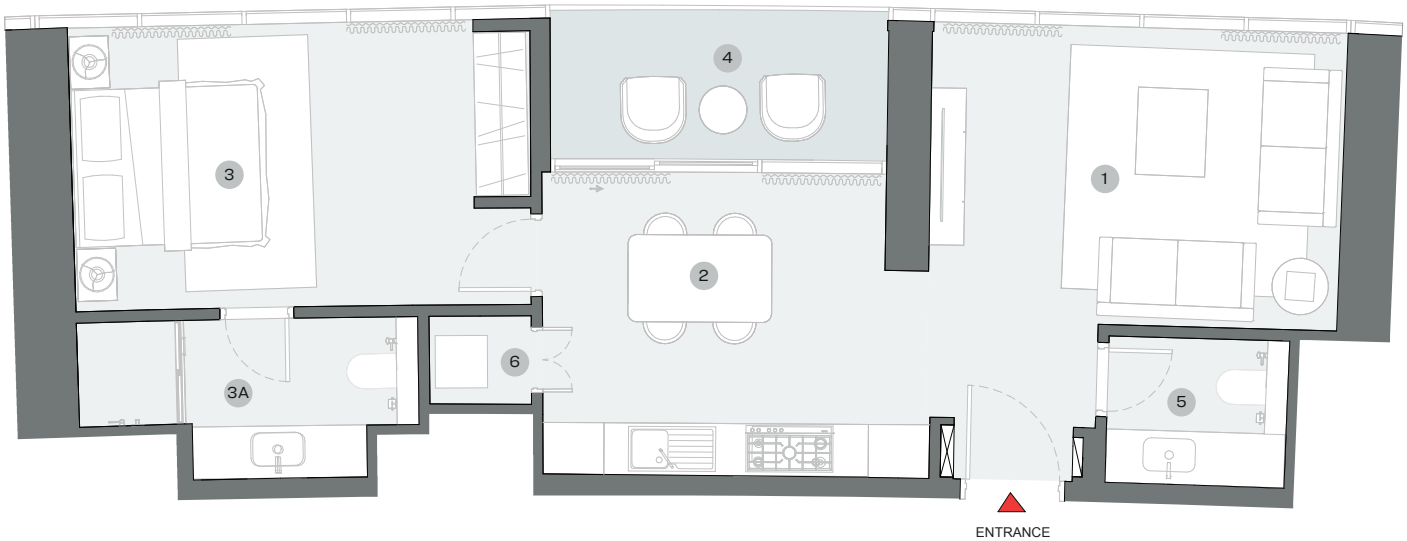
SUITE = 769.30 SQ.FT

BALCONY = 81.91 SQ.FT

TOTAL = 851.21 SQ.FT



UNIT



List of unit numbers with this unit plan:

## VIEWS

### Marina Skyline

C1106, C1206, C1306, C1406, C1506, C1606, C1706, C1806, C1906, C2006, C2106, C2206, C2306, C2406, C2506, C2606, C2706, C2806, C2906, C3006, C3106, C3206

## DIMENSIONS (MM)

1 LIVING - 4700 X 3400	3 BEDROOM - 4600 X 3250	4 BALCONY - 3900 X 1700
2 KITCHEN/DINING - 3950 X 3450	3A BATHROOM - 3900 X 1850	5 POWDER - 2050 X 1700
		6 UTILITY - 1150 X 1000

Disclaimer: 1. All dimensions are in metric, measured to wall finishes. 2. All materials, dimensions & drawings are approximate. 3. Information is subject to change without notice, at developer's absolute discretion. 4. Actual area may vary from the stated area. 5. Drawing are not to scale. 6. All images used are for illustrative purpose only and do not represent the actual size, features, specifications, fittings and furnishings. 7. The developer reserves the right to make revisions/ alterations, at its absolute discretion, without any liability whatsoever.

# 1 BEDROOM APARTMENT

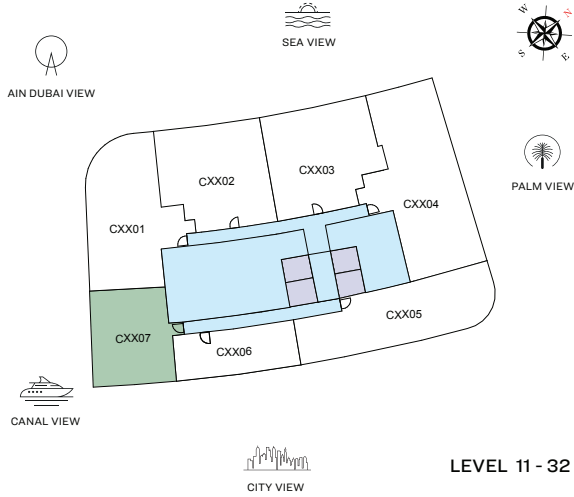
TYPE B (with powder room + study room + balcony)

**TOTAL SALEABLE AREA**

SUITE = 1,107.93 SQ.FT

BALCONY = 131.21 SQ.FT

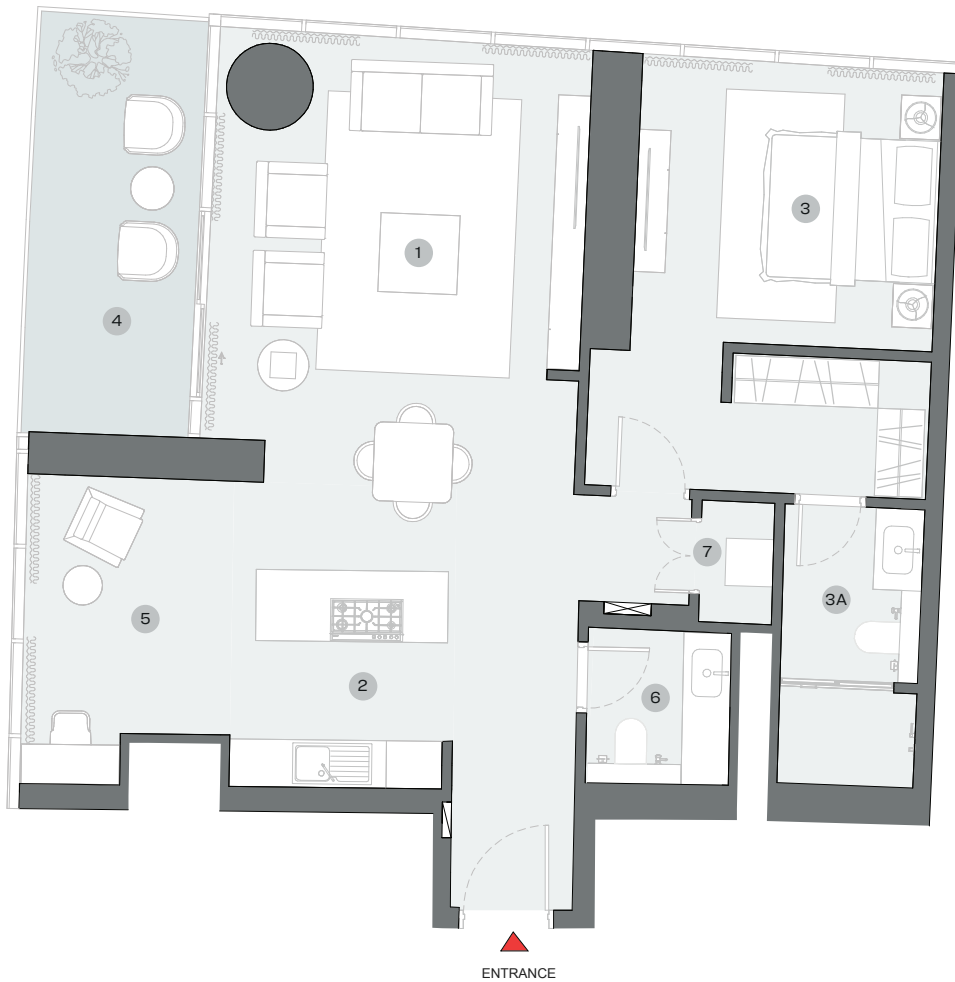
TOTAL = 1,239.14 SQ.FT



UNIT



LEVEL 11 - 32



List of unit numbers with this unit plan:

## VIEWS

### Marina Skyline

C1107, C1207, C1307, C1407, C1507, C1607, C1707, C1807, C1907, C2007, C2107, C2207, C2307, C2407, C2507, C2607, C2707, C2807, C2907, C3007, C3107, C3207

## DIMENSIONS (MM)

1 LIVING - 4700 X 5200	3 BEDROOM - 3800 X 3550	5 STUDY - 2600 X 3200
2 KITCHEN/DINING - 2800 X 4400	3A BATHROOM - 1700 X 3550	6 POWDER - 1800 X 1950
	4 BALCONY - 2150 X 5300	7 UTILITY - 900 X 1550

Disclaimer: 1. All dimensions are in metric, measured to wall finishes. 2. All materials, dimensions & drawings are approximate. 3. Information is subject to change without notice, at developer's absolute discretion. 4. Actual area may vary from the stated area. 5. Drawing are not to scale. 6. All images used are for illustrative purpose only and do not represent the actual size, features, specifications, fittings and furnishings. 7. The developer reserves the right to make revisions/ alterations, at its absolute discretion, without any liability whatsoever.

# 2 BEDROOM APARTMENT

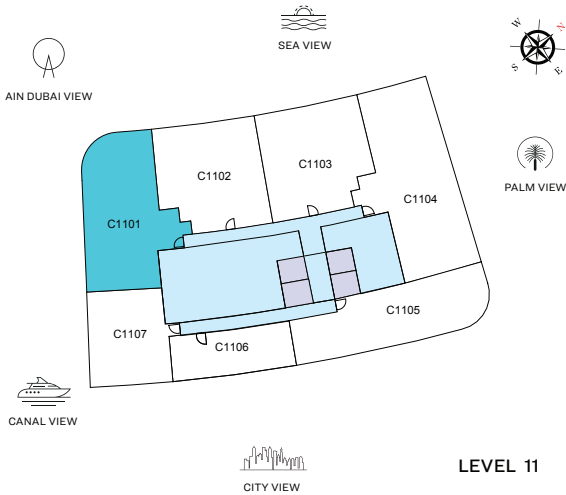
## TYPE A (with powder room + balcony)

**TOTAL SALEABLE AREA**

SUITE = 1,723.41 SQ.FT

BALCONY = 279.11 SQ.FT

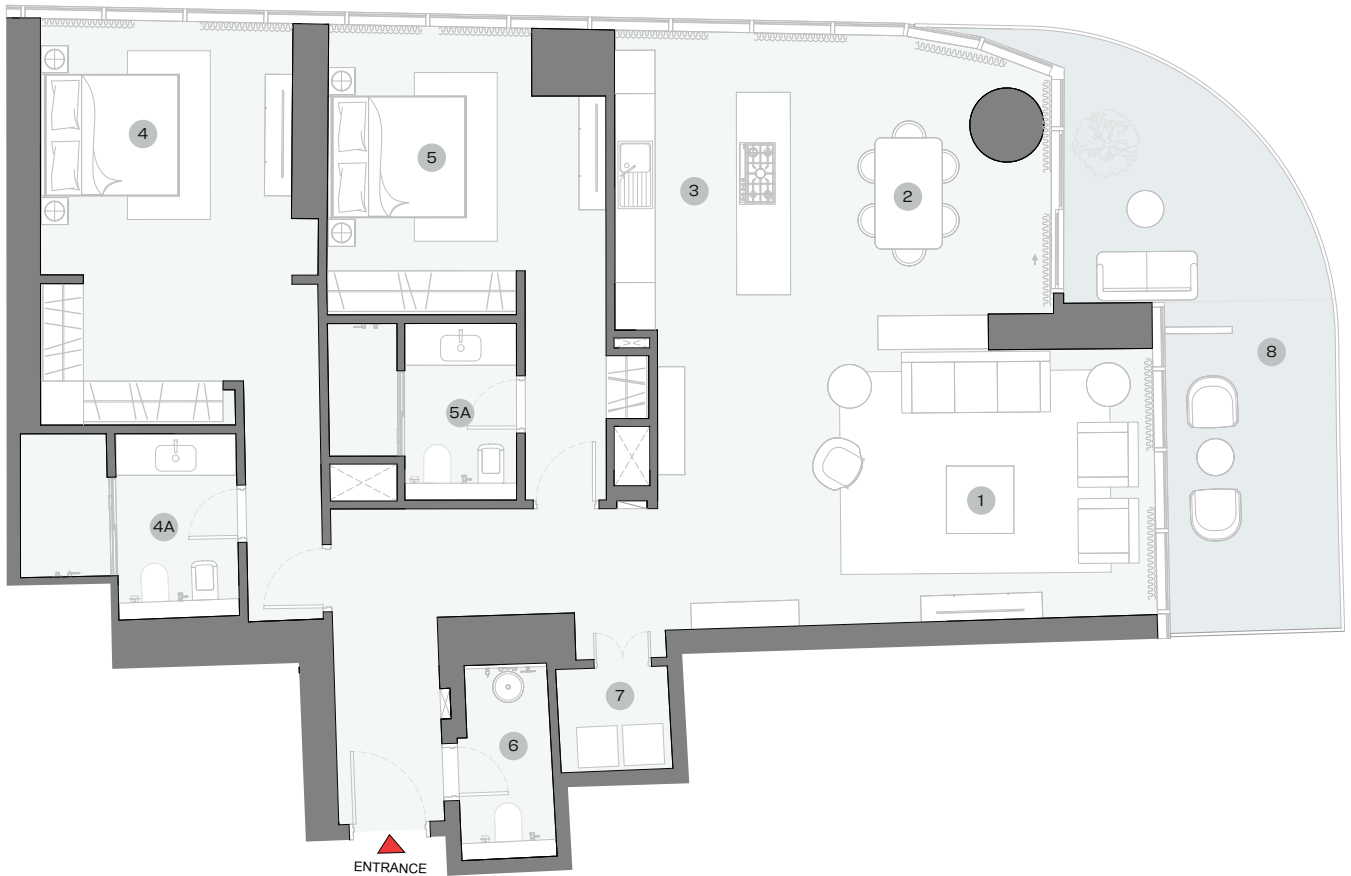
TOTAL = 2,002.52 SQ.FT



UNIT



LEVEL 11



List of unit numbers with this unit plan:

### VIEWS

Blue waters, Ain Dubai, Palm Jumeirah, Harbour, Sea, Skydive  
C1101

### DIMENSIONS (MM)

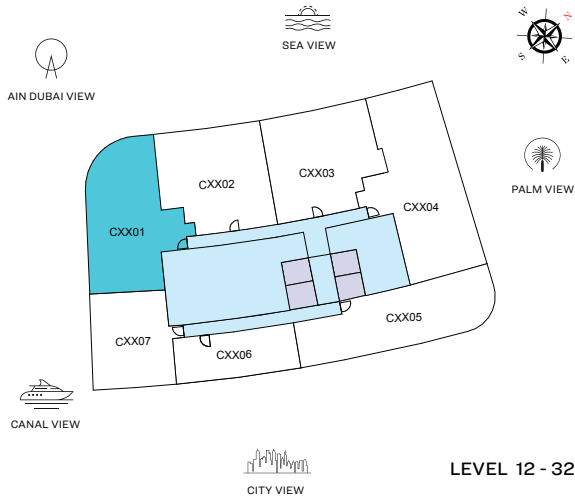
1 LIVING - 7400 x 4300	4 MASTER BEDROOM - 3750 X 5350	6 POWDER - 1400 x 2900
2 DINING - 3900 x 4400	4A MASTER BATHROOM - 3200 x 2750	7 UTILITY - 1650 x 1500
3 KITCHEN - 2600 x 4500	5 BEDROOM 2 - 4100 x 3650	8 BALCONY - 2500 x 4850
	5A BATHROOM 2 - 2800 x 2600	

Disclaimer: 1. All dimensions are in metric, measured to wall finishes. 2. All materials, dimensions & drawings are approximate. 3. Information is subject to change without notice, at developer's absolute discretion. 4. Actual area may vary from the stated area. 5. Drawing are not to scale. 6. All images used are for illustrative purpose only and do not represent the actual size, features, specifications, fittings and furnishings. 7. The developer reserves the right to make revisions/ alterations, at its absolute discretion, without any liability whatsoever.

# 2 BEDROOM APARTMENT

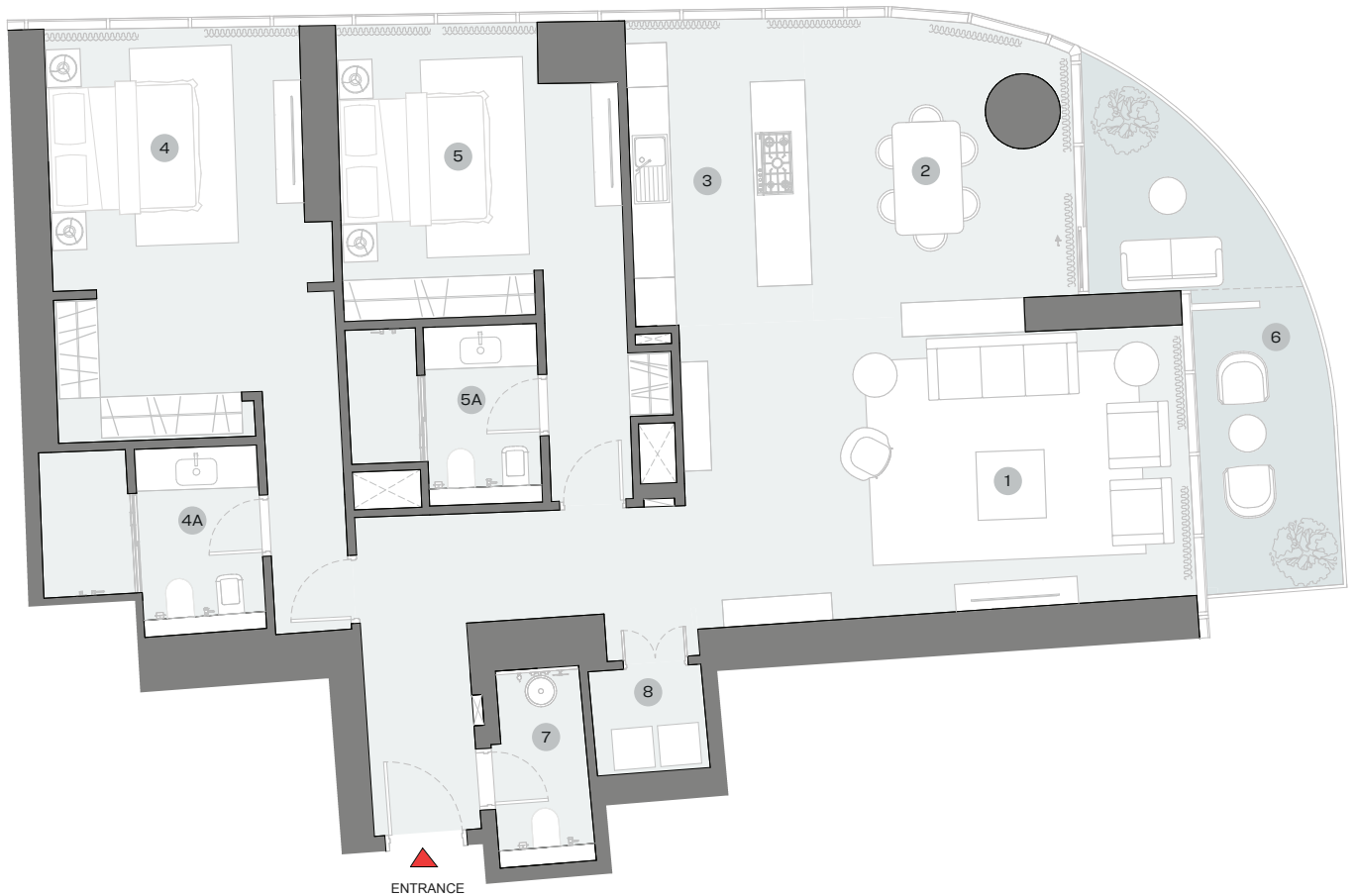
## TYPE A (with powder room + balcony)

**TOTAL SALEABLE AREA**  
 SUITE RANGE = 1,723.41 - 1,728.04 SQ.FT  
 BALCONY RANGE = 180.73 - 186.11 SQ.FT  
 TOTAL RANGE = 1,904.14 - 1,914.15 SQ.FT



LEVEL 12 - 32

UNIT



List of unit numbers with this unit plan:

### VIEWS

Blue waters, Ain Dubai, Palm Jumeirah, Harbour, Sea, Skydive

C1201, C1301, C1401, C1501, C1601, C1701, C1801, C1901, C2001, C2101, C2201, C2301, C2401, C2501, C2601, C2701, C2801, C2901, C3001, C3101, C3201

### DIMENSIONS (MM)

1 LIVING - 7400 X 4300	4 MASTER BEDROOM - 3750 X 5350	6 BALCONY - 2000 X 4700
2 DINING - 3900 X 4400	4A MASTER BATHROOM - 3200 X 2750	7 POWDER - 1400 X 2900
3 KITCHEN - 2600 X 4500	5 BEDROOM 2 - 4100 X 3650	8 UTILITY - 1650 X 1500
	5A BATHROOM 2 - 2800 X 2600	

Disclaimer: 1. All dimensions are in metric, measured to wall finishes. 2. All materials, dimensions & drawings are approximate. 3. Information is subject to change without notice, at developer's absolute discretion. 4. Actual area may vary from the stated area. 5. Drawing are not to scale. 6. All images used are for illustrative purpose only and do not represent the actual size, features, specifications, fittings and furnishings. 7. The developer reserves the right to make revisions/ alterations, at its absolute discretion, without any liability whatsoever.

# 2 BEDROOM APARTMENT

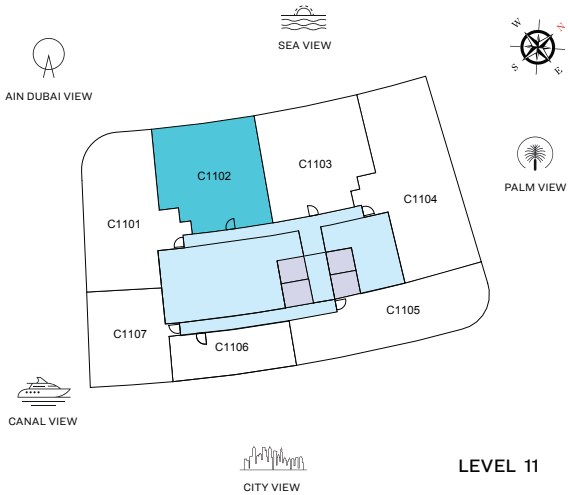
## TYPE B (with powder room + balcony)

**TOTAL SALEABLE AREA**

SUITE = 1,285.86 SQ.FT

BALCONY = 465.75 SQ.FT

TOTAL = 1,751.61 SQ.FT



**UNIT**



**LEVEL 11**



List of unit numbers with this unit plan:

### VIEWS

Palm Jumeirah, Harbour, Sea  
C1102

### DIMENSIONS (MM)

1 LIVING - 4200 x 4000	4 MASTER BEDROOM - 3800 x 4450	6 POWDER - 1750 x 1950
2 DINING - 4250 x 2800	4A MASTER BATHROOM - 3000 x 2550	7 UTILITY - 850 x 1450
3 KITCHEN - 2850 x 2500	5 BEDROOM 2 - 3600 x 3700	8 BALCONY - 8050 x 3600
	5A BATHROOM 2 - 2800 x 2600	8A BALCONY 2 - 4750 x 2500

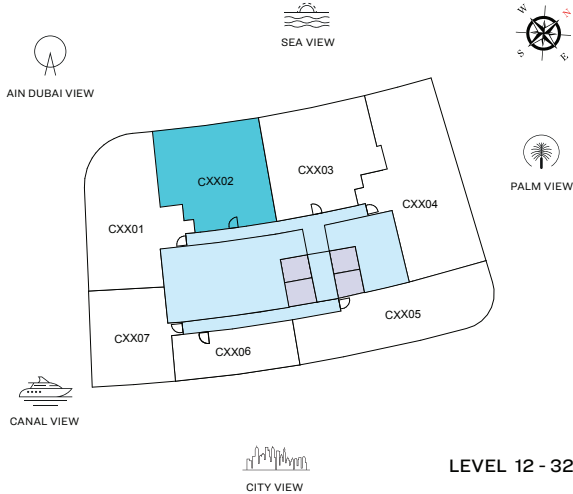
Disclaimer: 1. All dimensions are in metric, measured to wall finishes. 2. All materials, dimensions & drawings are approximate. 3. Information is subject to change without notice, at developer's absolute discretion. 4. Actual area may vary from the stated area. 5. Drawing are not to scale. 6. All images used are for illustrative purpose only and do not represent the actual size, features, specifications, fittings and furnishings. 7. The developer reserves the right to make revisions/ alterations, at its absolute discretion, without any liability whatsoever.

# 2 BEDROOM APARTMENT

## TYPE B (with powder room + balcony)

### TOTAL SALEABLE AREA

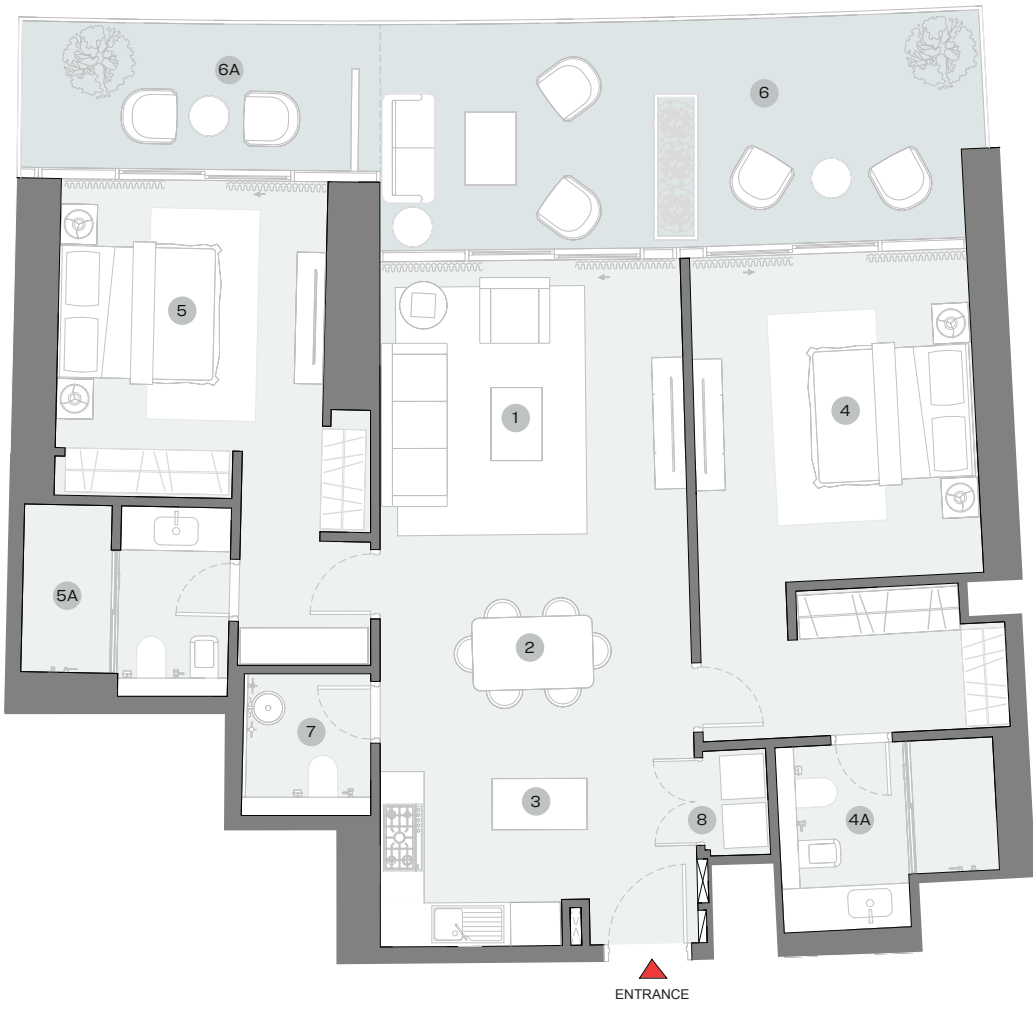
SUITE RANGE = 1,285.64 - 1,287.47 SQ.FT  
 BALCONY RANGE = 382.66 - 396.00 SQ.FT  
 TOTAL RANGE = 1,668.30 - 1,683.47 SQ.FT



UNIT



LEVEL 12 - 32



List of unit numbers with this unit plan:

### VIEWS

Palm Jumeirah, Harbour, Sea

C1202, C1302, C1402, C1502, C1602, C1702, C1802, C1902, C2002, C2102, C2202, C2302, C2402, C2502, C2602, C2702, C2802, C2902, C3002, C3102, C3202

### DIMENSIONS (MM)

1 LIVING - 4200 X 4000	4 MASTER BEDROOM - 3800 X 4450	6 BALCONY - 8250 X 3100
2 DINING - 4250 X 2800	4A MASTER BATHROOM - 3000 X 2550	6A BALCONY 2 - 4650 X 2000
3 KITCHEN - 2850 X 2500	5 BEDROOM 2 - 3600 X 3700	7 POWDER - 1750 X 1950
	5A BATHROOM 2 - 2800 X 2600	8 UTILITY - 850 X 1450

Disclaimer: 1. All dimensions are in metric, measured to wall finishes. 2. All materials, dimensions & drawings are approximate. 3. Information is subject to change without notice, at developer's absolute discretion. 4. Actual area may vary from the stated area. 5. Drawing are not to scale. 6. All images used are for illustrative purpose only and do not represent the actual size, features, specifications, fittings and furnishings. 7. The developer reserves the right to make revisions/ alterations, at its absolute discretion, without any liability whatsoever.

# 2 BEDROOM APARTMENT

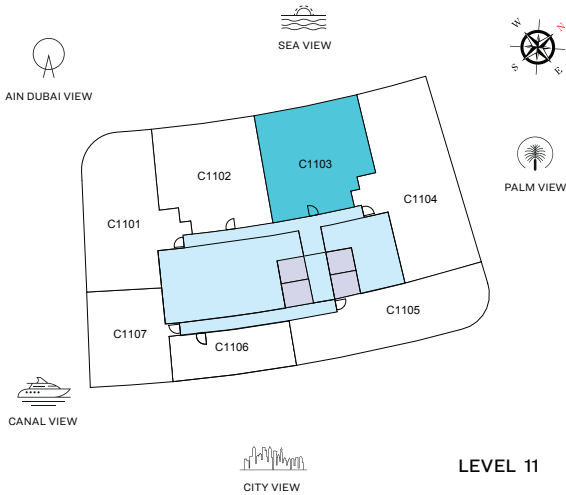
## TYPE C (with powder room + balcony)

**TOTAL SALEABLE AREA**

SUITE = 1,285.10 SQ.FT

BALCONY = 469.41 SQ.FT

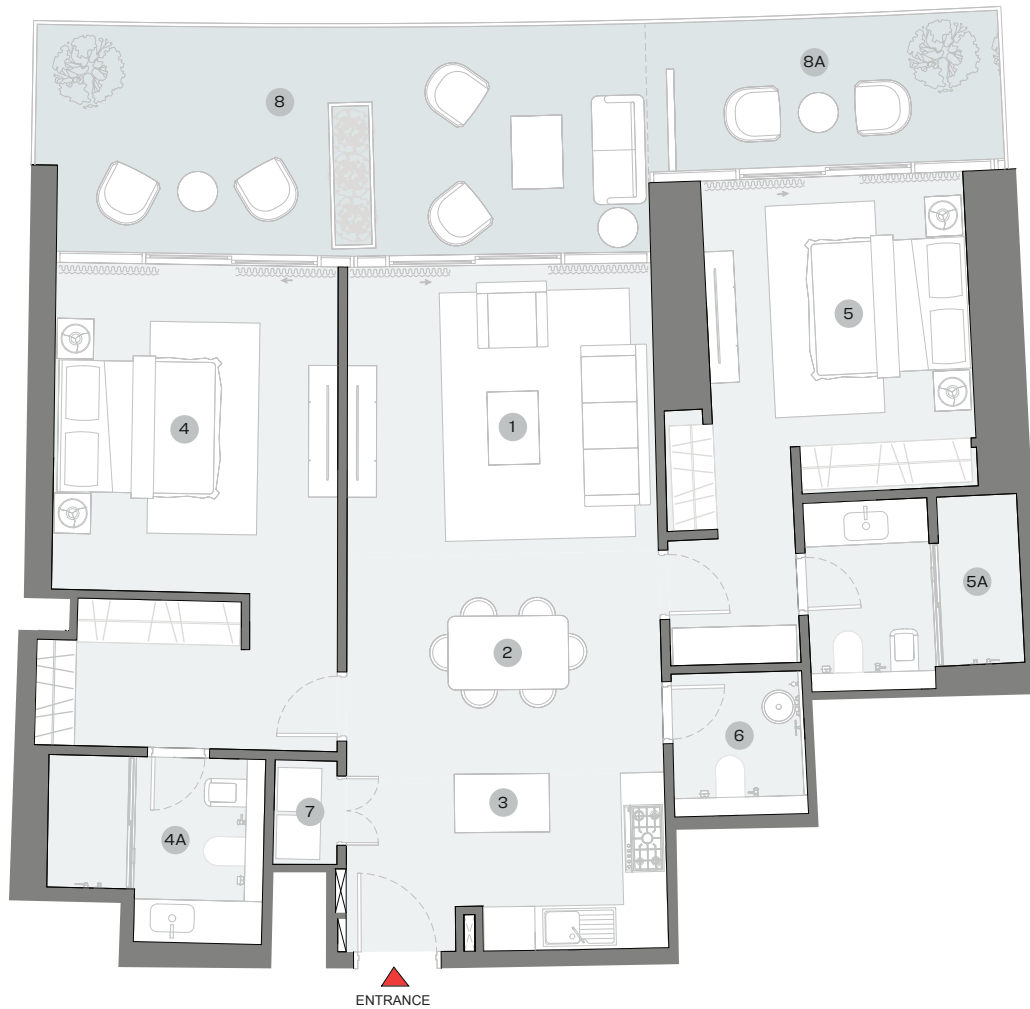
TOTAL = 1,754.51 SQ.FT



■ UNIT



**LEVEL 11**



List of unit numbers with this unit plan:

### VIEWS

Palm Jumeirah, Harbour, Sea  
C1103

### DIMENSIONS (MM)

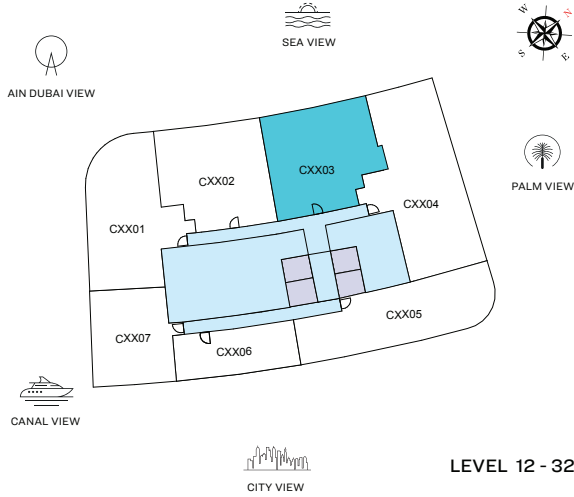
1 LIVING - 4200 x 4000	4 MASTER BEDROOM - 3850 x 4450	6 POWDER - 1800 x 1950
2 DINING - 4300 x 2800	4A MASTER BATHROOM - 3000 x 2550	7 UTILITY - 850 x 1450
3 KITCHEN - 2850 x 2500	5 BEDROOM 2 - 3600 x 3700	8 BALCONY - 8200 x 3600
	5A BATHROOM 2 - 2900 x 2600	8A BALCONY 2 - 4750 x 2500

Disclaimer: 1. All dimensions are in metric, measured to wall finishes. 2. All materials, dimensions & drawings are approximate. 3. Information is subject to change without notice, at developer's absolute discretion. 4. Actual area may vary from the stated area. 5. Drawing are not to scale. 6. All images used are for illustrative purpose only and do not represent the actual size, features, specifications, fittings and furnishings. 7. The developer reserves the right to make revisions/ alterations, at its absolute discretion, without any liability whatsoever.

# 2 BEDROOM APARTMENT

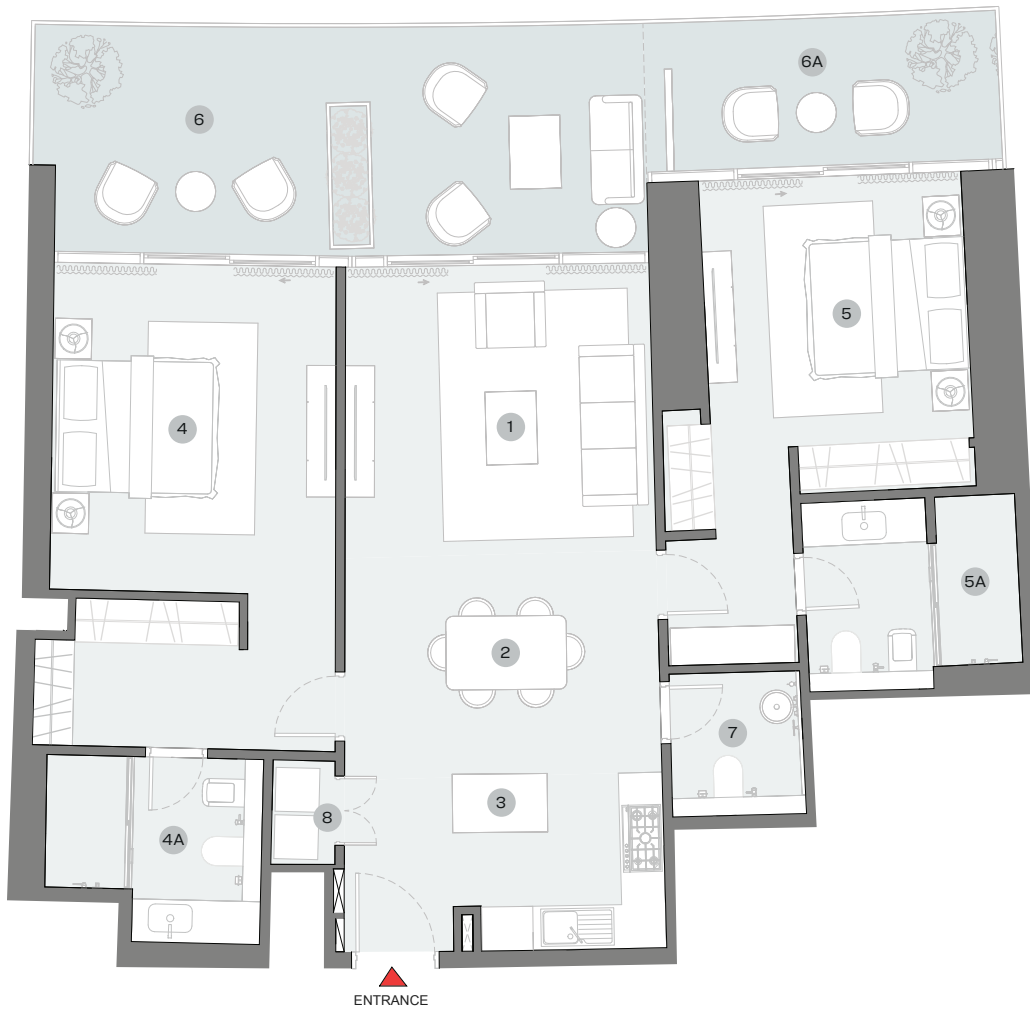
## TYPE C (with powder room + balcony)

**TOTAL SALEABLE AREA**  
 SUITE RANGE = 1,284.78 - 1,288.44 SQ.FT  
 BALCONY RANGE = 386.53 - 398.59 SQ.FT  
 TOTAL RANGE = 1,671.31 - 1,687.03 SQ.FT



LEVEL 12 - 32

UNIT



List of unit numbers with this unit plan:

### VIEWS

Palm Jumeirah, Harbour, Sea

C1203, C1303, C1403, C1503, C1603, C1703, C1803, C1903, C2003, C2103, C2203, C2303, C2403, C2503, C2603, C2703, C2803, C2903, C3003, C3103, C3203

### DIMENSIONS (MM)

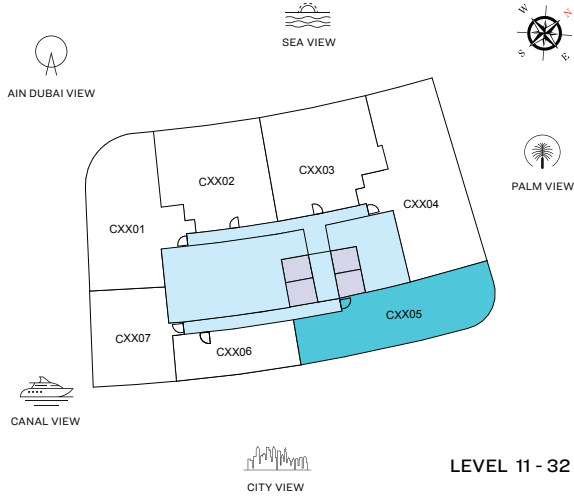
1 LIVING - 4200 X 4000	4 MASTER BEDROOM - 3850 X 4450	6 BALCONY - 8200 X 3100
2 DINING - 4300 X 2800	4A MASTER BATHROOM - 3000 X 2550	6A BALCONY 2 - 4750 X 2000
3 KITCHEN - 2850 X 2500	5 BEDROOM 2 - 3600 X 3700	7 POWDER - 1800 X 1950
	5A BATHROOM 2 - 2900 X 2600	8 UTILITY - 850 X 1450

Disclaimer: 1. All dimensions are in metric, measured to wall finishes. 2. All materials, dimensions & drawings are approximate. 3. Information is subject to change without notice, at developer's absolute discretion. 4. Actual area may vary from the stated area. 5. Drawing are not to scale. 6. All images used are for illustrative purpose only and do not represent the actual size, features, specifications, fittings and furnishings. 7. The developer reserves the right to make revisions/ alterations, at its absolute discretion, without any liability whatsoever.

# 2 BEDROOM APARTMENT

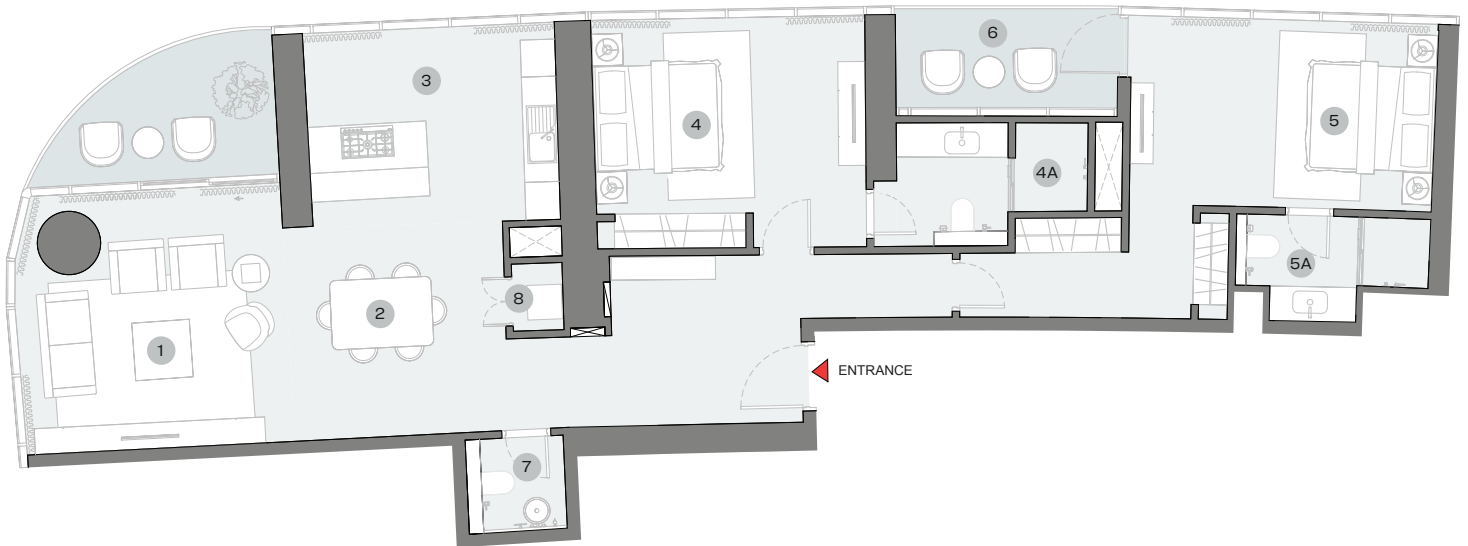
## TYPE D (with powder room + balcony)

**TOTAL SALEABLE AREA**  
 SUITE RANGE = 1,534.61 - 1,538.38 SQ.FT  
 BALCONY RANGE = 177.82 - 188.26 SQ.FT  
 TOTAL RANGE = 1,716.20 - 1,722.87 SQ.FT



LEVEL 11 - 32

UNIT



List of unit numbers with this unit plan:

### VIEWS

#### Marina Skyline

C1105, C1205, C1305, C1405, C1505, C1605, C1705, C1805, C1905, C2005, C2105, C2205, C2305, C2405, C2505, C2605, C2705, C2805, C2905, C3005, C3105, C3205

### DIMENSIONS (MM)

1 LIVING - 4650 X 4500	4 BEDROOM 1 - 4650 X 3350	6 BALCONY - 3850 X 1700
2 DINING - 3750 X 3700	4A BATHROOM 1 - 3300 X 2100	7 POWDER - 1700 X 1650
3 KITCHEN - 4300 X 3350	5 BEDROOM 2 - 5200 X 3250	8 UTILITY - 850 X 1150
	5A BATHROOM 2 - 3400 X 1850	

Disclaimer: 1. All dimensions are in metric, measured to wall finishes. 2. All materials, dimensions & drawings are approximate. 3. Information is subject to change without notice, at developer's absolute discretion. 4. Actual area may vary from the stated area. 5. Drawing are not to scale. 6. All images used are for illustrative purpose only and do not represent the actual size, features, specifications, fittings and furnishings. 7. The developer reserves the right to make revisions/ alterations, at its absolute discretion, without any liability whatsoever.

# 3 BEDROOM APARTMENT

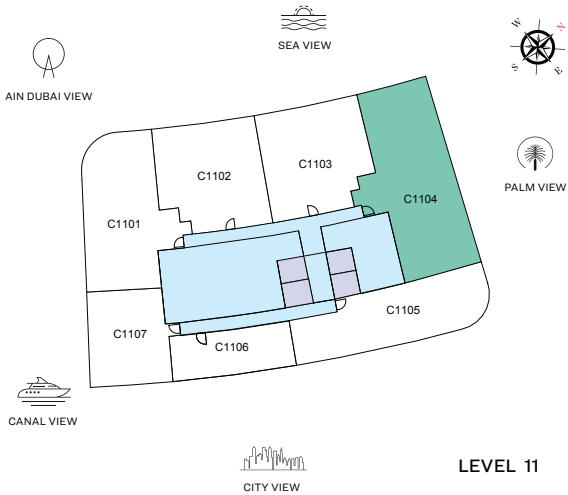
## TYPE A (with powder room + balcony)

**TOTAL SALEABLE AREA**

SUITE = 2,119.20 SQ.FT

BALCONY = 320.33 SQ.FT

TOTAL = 2,439.53 SQ.FT



UNIT



### DIMENSIONS (MM)

List of unit numbers with this unit plan:

### VIEWS

Palm Jumeirah, Harbour, Sea  
C1104

1 LIVING - 7400 x 4250	4 BEDROOM 1 - 4150 x 3550	7 POWDER - 1400 x 3150
2 DINING - 3800 x 4400	4A BATHROOM 1 - 2800 x 2600	8 UTILITY - 1650 x 1650
3 KITCHEN - 2700 x 4400	5 BEDROOM 2 - 3750 x 3650	9 BALCONY - 4000 x 3950
	5A BATHROOM 2 - 3000 x 2650	9A BALCONY 2 - 2500 x 4850
	6 BEDROOM 3 - 3800 x 3750	
	6A BATHROOM 3 - 2800 x 2700	

Disclaimer: 1. All dimensions are in metric, measured to wall finishes. 2. All materials, dimensions & drawings are approximate. 3. Information is subject to change without notice, at developer's absolute discretion. 4. Actual area may vary from the stated area. 5. Drawing are not to scale. 6. All images used are for illustrative purpose only and do not represent the actual size, features, specifications, fittings and furnishings. 7. The developer reserves the right to make revisions/ alterations, at its absolute discretion, without any liability whatsoever.

# 3 BEDROOM APARTMENT

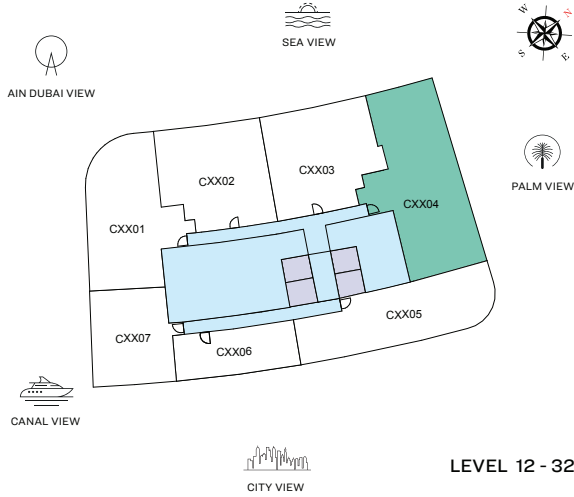
## TYPE A (with powder room + balcony)

**TOTAL SALEABLE AREA**

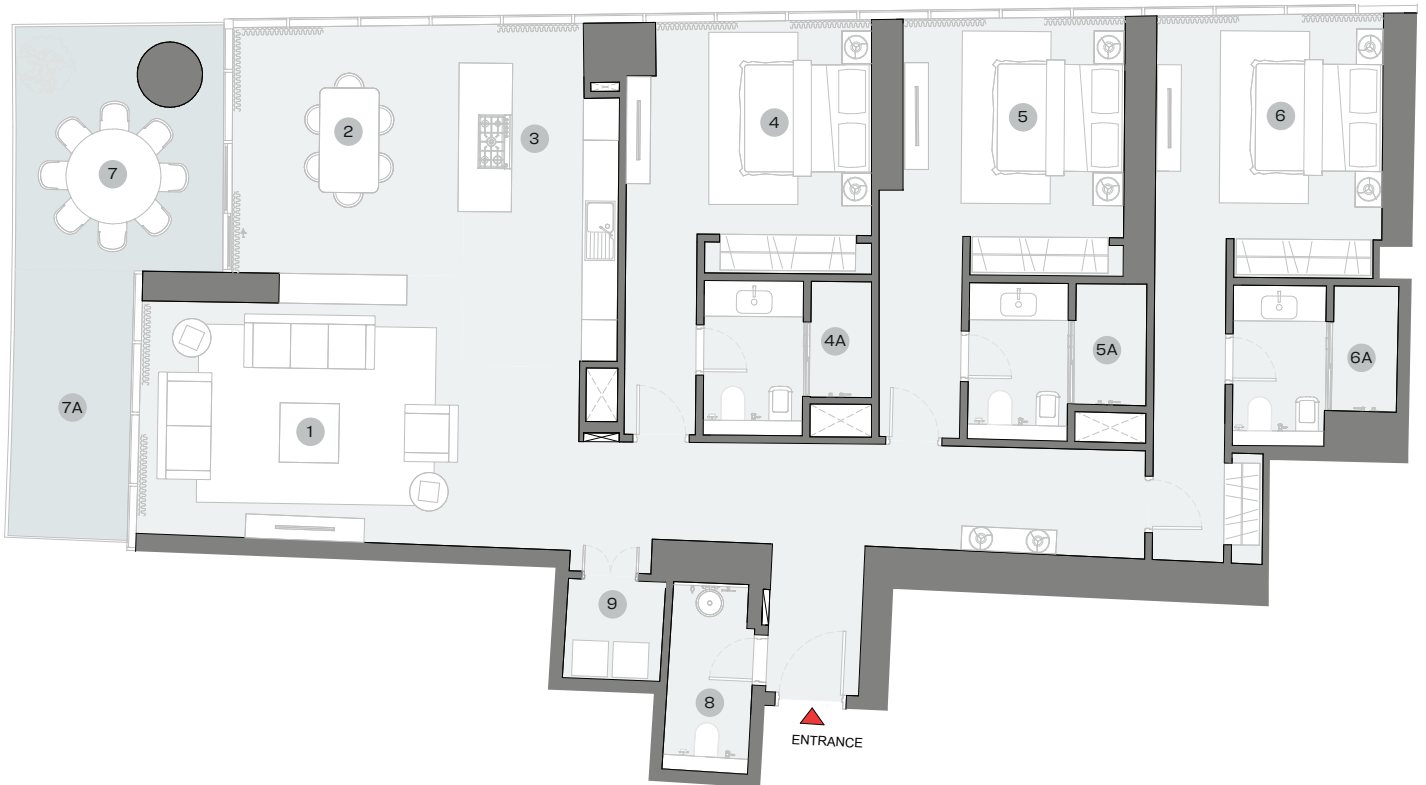
SUITE RANGE = 2,119.20 - 2,124.69 SQ.FT

BALCONY RANGE = 262.42 - 271.36 SQ.FT

TOTAL RANGE = 2,381.62 - 2,396.05 SQ.FT



UNIT



List of unit numbers with this unit plan:

### VIEWS

Palm Jumeirah, Harbour, Sea

C1204, C1304, C1404, C1504, C1604, C1704, C1804, C1904, C2004, C2104, C2204, C2304, C2404, C2504, C2604, C2704, C2804, C2904, C3004, C3104, C3204

### DIMENSIONS (MM)

1 LIVING - 7400 X 4250	4A BATHROOM 1 - 2800 X 2600	6A BATHROOM 3 - 2800 X 2700
2 DINING - 3800 X 4400	5 BEDROOM 2 - 3750 X 3650	7 BALCONY - 3500 X 4150
3 KITCHEN - 2700 X 4400	5A BATHROOM 2 - 3000 X 2650	7A BALCONY 2 - 2000 X 4750
4 BEDROOM 1 - 4150 X 3550	6 BEDROOM 3 - 3800 X 3750	8 POWDER - 1400 X 3150
		9 UTILITY - 1650 X 1650

Disclaimer: 1. All dimensions are in metric, measured to wall finishes. 2. All materials, dimensions & drawings are approximate. 3. Information is subject to change without notice, at developer's absolute discretion. 4. Actual area may vary from the stated area. 5. Drawing are not to scale. 6. All images used are for illustrative purpose only and do not represent the actual size, features, specifications, fittings and furnishings. 7. The developer reserves the right to make revisions/ alterations, at its absolute discretion, without any liability whatsoever.

SOBHA  
REALTY